

**project: syntropy (Germany / Sweden / Shanghai-Singapore-Taiwan)** creates AV technologies and solutions for professional simulation- and training environments, interactive, immersive media based attractions, xD dome theatres, planetariums as well as multimedia experiences. Many years of development and over one 150 projects world-wide have resulted in highly scalable turnkey fulldome cinema attractions.

## Project

### EXPO 2012 Korea Pavilion - Mega Circle

#### Theater - gigantic fulldome projection

#### Location

EXPO 2012, Main Pavilion of Korea – Yeosu / Korea.

#### Project

The 'Mega Circle Theater' is a huge 30 m in diameter cylinder projection with 12 Full HD projection channels and a seamlessly intertwined dome projection with a height of 7.5 m ft. nine additional projection channels.

#### Project Details

project: syntropy was commissioned to take over the technical planning and integration work including installation of a dome-projection.com auto-alignment system, initial calibration and media mastering of the fulldome hi-resolution movie for one of the largest fulldome venues ever built in history.

Without the powerful tools and the know how offered by project: syntropy it would not have been possible to setup the complex projection system with hi-end quality in such a short amount of realization time. Furthermore, due to the auto-alignment, maintenance time was reduced to an absolute minimum.

#### About the Korea Pavilion

The Korea Pavilion presents the future vision of Korea as a leading maritime nation, its primary theme is Korea's spirit of ocean exploration and ocean capabilities.

The 'Mega Circle Theater' was the main attraction of the pavilion, one of the largest dome projections ever built: it features a 30 m in diameter cylinder projection with 12 Full HD projection channels and a seamlessly intertwined dome projection with a height of 7.5 m plus nine additional projection channels.

**Videolinks:** <https://youtu.be/yefzM-V4yGg>  
<https://youtu.be/6ADsdRrfsFo>

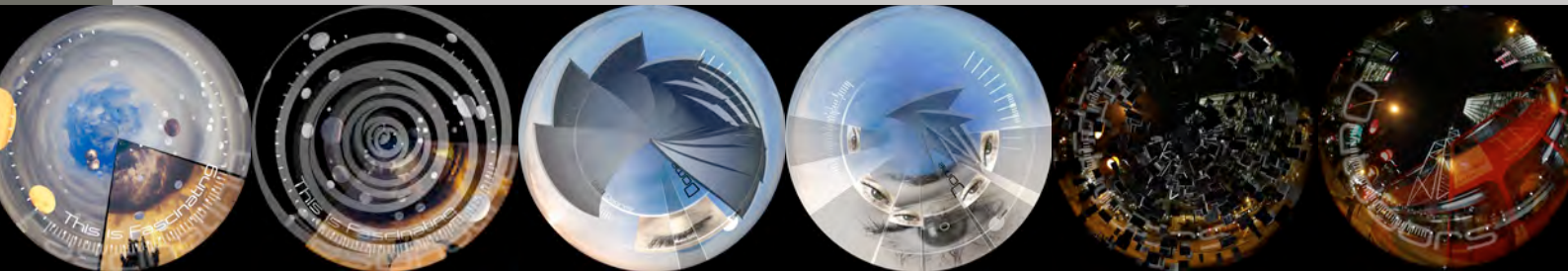


Leading Provider of Next Generation Immersive Fulldomes

**project: syntropy GmbH**  
 D-39112 Magdeburg/Germany, Klausenerstrasse 47  
 T: +49 (0) 391 63 60 66-44 | Fax: +49 (0) 391 63 60 66-45  
 M: syntropians@project-syntropy.de <http://www.project-syntropy.de>

project:syntropy





## Turnkey Visual Solutions for Simulation, Training and Media Based Attractions

project: syntropy offers turnkey projection solutions, tailor-made systems and full-service throughout the entire project.

- CONSULTING
  - CONCEPT AND DESIGN
    - creative
    - interactive
    - media
    - engineering
    - application
  - DEVELOPMENT
  - ENGINEERING
  - CONSTRUCTION AND INSTALLATION
  - AFTER SALES SERVICES
    - training
    - maintenance and support
    - tailored service-level-agreements (SLA)
    - spareparts supply
  - MEDIA BASED ATTRACTIONS
- XD FLYING THEATRES - XD 360° & 720° ATTRACTION DOME  
 CINEMAS & GLOBES - INTERACTIVE VISITOR ATTRACTIONS -  
 MOTION THEATRES - DARK RIDES - PLANETARIUMS - MEDIA  
 FACADES - IMMERSIVE TUNNELS & IMMERSIVE ENVIRON-  
 MENTS - PROJECTION MAPPING - GUN SYSTEMS
- SYNTOUCH MULTITOUCH MULTIUSER & RADAR
  - MIXED REALITY ENVIRONMENTS &  
TRACKING TECHNOLOGY DEVELOPMENT
  - VISUAL SOLUTIONS FOR SIMULATION & TRAINING
- FMS FULL-MISSION-SIMULATORS - FFS FULL-FLIGHT-SI-  
 MULATORS - CT COCKPIT SIMULATORS - HELICOPTER  
 SIMULATORS - TARGET SIMULATION - JFST TRAINERS - JTAC  
 TRAINERS - ATM TOWER SIMULATORS - DRIVING SIMULA-  
 TORS - SHIPS BRIDGE SIMULATORS - INDUSTRIAL SIMULA-  
 TORS - RESEARCH SIMULATORS - CAVES

Leading Provider of Next Generation Immersive Fulldomes

project: syntropy GmbH  
 D-39112 Magdeburg/Germany, Klausenerstrasse 47  
 T: +49 (0) 391 63 60 66-44 | Fax: +49 (0) 391 63 60 66-45  
 M: syntropians@project-syntropy.de <http://www.project-syntropy.de>

project:syntropy