

project: syntropy (Germany / KSA / Sweden / Singapore)
creates AV technologies and solutions for professional simulation- and training environments, XR-CAVEs, XR-Spaces, interactive immersive media based attractions, xD dome theatres and planetariums. 25 years of experience and over 250 projects world-wide have resulted in highly scalable turnkey full-dome cinema attractions.

Project
Sigong Tech, South Korea: 4D Planetarium for Gimcheon Science Museum

Customer
Korean exhibition designer Sigong Tech Co., Ltd. for their customer Gimcheon Science Museum, Gimcheon, Gyeongsangbuk-do, South Korea.

Project
Turnkey 3D active stereo 11-channel WUXGA full-dome projection system for a planetarium with Uniview™ (now owned by ZEISS) media servers and planetarium software as well as a domeprojection.com ProjectionTools autocalibration.

Project Details
We designed, delivered and implemented a turnkey Digital Planetarium System for the Gimcheon Science Center in South Korea, which opened its doors in 2014, on behalf of our customer, the leading exhibition and museum design company Sigong Tech.
The 15m 30° tilted full-dome is equipped with 3D active stereo 11-channel-full-dome projection system and Uniview™ media servers and planetarium software.
A domeprojection.com ProjectionTools auto calibration system ensures seamless edge-blending and automatic geometry correction for an ultimate image quality. Finally, the surround audio system completes a rich media experience.
The digital planetarium has a capacity of 70 visitors and is equipped with 4D SFX seats.

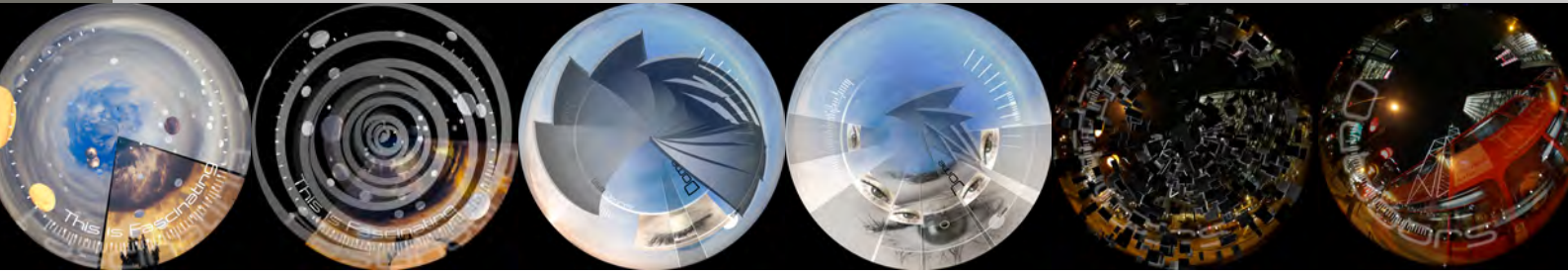
About the Gimcheon Science Museum
The 'Green Future' Gimcheon Science Museum - embedded in a surrounding park - attempts to communicate green and environmental friendly technologies in the modern way of a Science Center to a young audience by hands-on exhibits and also by the 4D planetarium full-dome theatre.



Leading Provider of Next Generation Immersive Planetarium Systems

project: syntropy GmbH
D-39112 Magdeburg/Germany, Klausenerstrasse 47
T: +49 (0) 391 63 60 66-44 | Fax: +49 (0) 391 63 60 66-45
M: syntropians@project-syntropy.de <http://www.project-syntropy.de>





Turnkey Display Solutions for Simulation, Training, Immersive XR-Spaces, XR-CAVES, Media Based Attractions

project: syntropy offers turnkey projection / dvLED-based display solutions, tailor-made AV systems and full-service throughout the entire project:

- PROJECTION- OR dvLED-BASED SYSTEMS
 - DEVELOPMENT
 - ENGINEERING
 - CONSTRUCTION AND INSTALLATION
 - AFTER SALES SERVICE
 - Training
 - Maintenance and Support
 - tailored Service-Level-Agreements (SLA)
 - Spare Parts Supply
- VISUAL SOLUTIONS FOR SIMULATION & TRAINING
 - FMS FULL-MISSION-SIMULATORS - FFS FULL-FLIGHT-SIMULATORS - CT COCKPIT SIMULATORS - HELICOPTER SIMULATORS - COMBAT SIMULATION - JFST ACTION TRAINERS - JTAC TRAINERS - ATM TOWER SIMULATORS - DRIVING SIMULATORS - SHIPS BRIDGE SIMULATORS - INDUSTRIAL SIMULATORS - RESEARCH SIMULATORS
- MEDIA BASED ATTRACTIONS
 - XD FLYING THEATRES - XD 360° & 720° ATTRACTION DOMES, CINEMAS & GLOBES - INTERACTIVE VISITOR ATTRACTIONS - MOTION THEATRES - DARK RIDES - MEDIA FACADES - IMMERSIVE TUNNELS & IMMERSIVE ENVIRONMENTS - PLANETARIUMS - PROJECTION MAPPING
- DIGITAL TWIN XR-SPACES (e.g. UDT Urban Digital Twins)
- XR-CAVE - XR VOLUMES
- SYNTOUCH MULTIUSER RADAR TOUCH
- MIXED REALITY ENVIRONMENTS & TRACKING TECHNOLOGY DEVELOPMENT

Leading Provider of Next Generation Immersive Planetarium Systems

project: syntropy GmbH
 D-39112 Magdeburg/Germany, Klausenerstrasse 47
 T: +49 (0) 391 63 60 66-44 | Fax: +49 (0) 391 63 60 66-45
 M: syntropians@project-syntropy.de <http://www.project-syntropy.de>

project:syntropy