



project: syntropy (Germany / KSA / Sweden / Singapore)
 creates AV technologies and solutions for professional simulation- and training environments, XR-CAVEs, XR-Spaces, interactive immersive media based attractions, xD dome theatres and planetariums. 25 years of experience and over 250 projects world-wide have resulted in highly scalable turnkey fulldome cinema attractions.

Project
UNSW (Sidney, Australia) DomeLab:
Immersive 3D-Stereo Fulldome Solution

Customer
 UNSW University of New South Wales, Art & Design, Sydney, Australia.

Project
 Mobile 6m fulldome all-in-one-solution featuring a foldable light-weight geodesic sphere, ultra high-resolution WQXGA 8-channel 3D stereo projection system, media server and domeprojection.com auto calibration; optimized for rapid assembly at optimum image quality.

Project Details
 We designed a mobile turnkey fulldome system equipped with eight WQXGA projectors which is amongst the world's top hi-end multi-channel 4K-3D stereo projection systems. The global travel fulldome system, which is fast and easy to set-up, was developed for the UNSW University of New South Wales, Australia, to explore three themes: interactive media, future museology and experimental humanities and is the first experimental fulldome in Australia. Over the next years the team of UNSW Art & Design will run workshops, festivals and venues with its so called DomeLab and visit different places worldwide.

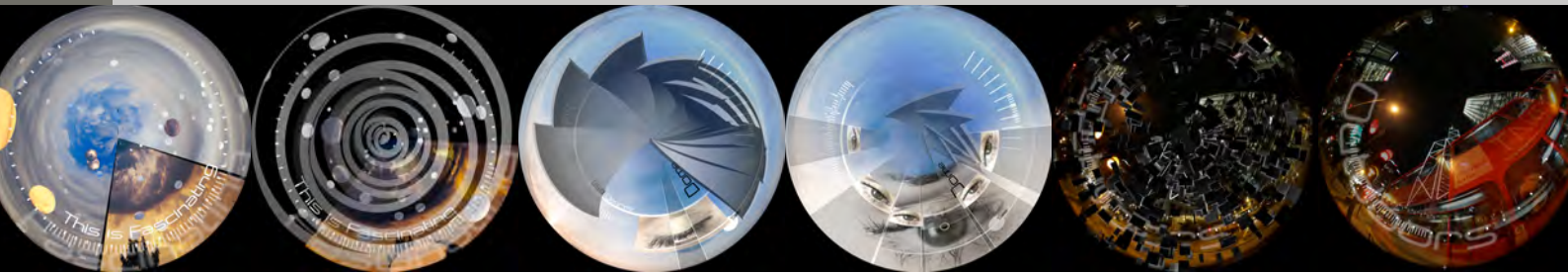
Traveling with the mobile DomeLab as well as assembly had to be easy and efficient: to meet those matters the fulldome consists of a lightweight, powder-coated aluminum geodesic frame; it is specifically designed for rapid assembly and comes complete with custom made flightcases. The double-layered screen equipped with negative pressure technology is made from custom shaped sheets of PVC welded together to create a perfect hemisphere for all kinds of projections. domeprojection.com auto calibration ensures seamless edge-blending and automatic geometry correction for an ultimate image quality. The surround audio system completes a rich media adventure. Professor Kenderdine and her team are thus very well equipped for their international five year DomeLab tour.



Leading Provider of Next Generation Immersive Fulldomes

project: syntropy GmbH
 D-39112 Magdeburg/Germany, Klausenerstrasse 47
 T: +49 (0) 391 63 60 66-44 | Fax: +49 (0) 391 63 60 66-45
 M: syntropians@project-syntropy.de <http://www.project-syntropy.de>





About UNSW Art & Design Institute

UNSW Art & Design Institute is driving Australia's focus on media innovation and emerging technologies. The Institute foregrounds experimentation and exploration and is collaborating across science, engineering, the humanities and social sciences. It is Australia's largest community of art and design practitioners, researchers, educators and students with faculty members originating from more than fifty countries globally.

The immersive travel fulldome made by project: syntropy GmbH is Australia's first experimental fulldome that will advance new frontiers in immersive visualization, intelligent interaction and networked experiences for interactive media, museology and digital humanities research. "DomeLab is a post-cinematic and aesthetically potent research environment which has its technological roots in everything from domed architecture to planetariums, projection mapping, flight simulation, and virtual reality," says Sarah Kenderdine, initiator at UNSW Art & Design.

Videolinks: <https://youtu.be/LJ6Fyk3rX1A>
<https://youtu.be/TCC4TXGbXzM>



Turnkey Display Solutions for Simulation, Training, Immersive XR-Spaces, XR-CAVES, Media Based Attractions

project: syntropy offers turnkey projection / dvLED-based display solutions, tailor-made AV systems and full-service throughout the entire project:

- PROJECTION- OR dvLED-BASED SYSTEMS
 - DEVELOPMENT
 - ENGINEERING
 - CONSTRUCTION AND INSTALLATION
 - AFTER SALES SERVICE
 - Training
 - Maintenance and Support
 - tailored Service-Level-Agreements (SLA)
 - Spare Parts Supply
- VISUAL SOLUTIONS FOR SIMULATION & TRAINING
 - FMS FULL-MISSION-SIMULATORS - FFS FULL-FLIGHT-SIMULATORS - CT COCKPIT SIMULATORS - HELICOPTER SIMULATORS - COMBAT SIMULATION - JFST ACTION TRAINERS - JTAC TRAINERS - ATM TOWER SIMULATORS - DRIVING SIMULATORS - SHIPS BRIDGE SIMULATORS - INDUSTRIAL SIMULATORS - RESEARCH SIMULATORS
- MEDIA BASED ATTRACTIONS
 - XD FLYING THEATRES - XD 360° & 720° ATTRACTION DOMES, CINEMAS & GLOBES - INTERACTIVE VISITOR ATTRACTIONS - MOTION THEATRES - DARK RIDES - MEDIA FACADES - IMMERSIVE TUNNELS & IMMERSIVE ENVIRONMENTS - PLANETARIUMS - PROJECTION MAPPING
- DIGITAL TWIN XR-SPACES (e.g. UDT Urban Digital Twins)
- XR-CAVE - XR VOLUMES
- SYNTOUCH MULTIUSER RADAR TOUCH
- MIXED REALITY ENVIRONMENTS & TRACKING TECHNOLOGY DEVELOPMENT

Leading Provider of Next Generation Immersive Fulldomes

project: syntropy GmbH
 D-39112 Magdeburg/Germany, Klausenerstrasse 47
 T: +49 (0) 391 63 60 66-44 | Fax: +49 (0) 391 63 60 66-45
 M: syntropians@project-syntropy.de <http://www.project-syntropy.de>

project:syntropy